

1. DISCLAIMER OF LIABILITY

The installation, handling and use of HD solar crystalline series modules are beyond company control. Accordingly, HD solar does not assume responsibility for loss, damage, injury or expense resulting from improper installation, handling, use or maintenance.

HD solar assumes no responsibility for any infringement of patents or other rights of third parties that may result from use of the module. No license is granted by implication or under any patent or patent rights. Specifications included in this manual are subject to change without prior notice.

2. SAFETY PRECAUTIONS

1. When designing the PV system, please always take into consideration the variation of the voltage under different temperatures (please check the respective temperature coefficient specifications of the modules, the V_{oc} of the modules will rise when the temperature drops);
2. HD solar requires that every PV module string should be fused prior to be connected with other strings. For the maximum fuse rate, please refer to the detailed SPEC in the last page.
3. Solar photovoltaic (PV) modules generate electricity when exposed to light. An array of many such modules can cause lethal shocks and/or burn hazards. Only authorized and trained personnel should have access to the modules.
4. Use properly insulated tools and appropriate protective equipment to reduce risk of electric shock.
5. Do not stand or step on the module.
6. Do not damage or scratch the front or backside surfaces of the module.
7. Never use a module with broken glass or top substrate. Broken modules should not be repaired and contact with any module surface can lead to electrical shock.
8. Do not disassemble the modules or remove any part of the module.
9. Protect plug contacts against soiling and do not make any plug connections using soiled plug contacts.
10. Do not install or handle modules when they are wet or during periods of high wind.
11. Do not connect cable from the positive terminal to the positive terminal of one single PV module.
12. Make sure connectors have no gap between insulators. A gap can cause fire hazard and/or danger of an electrical shock.
13. Make sure that the polarity of each module or a string is not reversed relative to the other the modules or strings
14. Artificially concentrated sunlight should not be used on the PV module.
15. In markets conforming to IEC standard, maximum system voltage must not exceed 1500V DC. In markets conforming to UL standard, maximum system voltage must not exceed 1000V DC. For roof use, the maximum system voltage must not exceed 600V according to National Electrical Code.
16. Under normal conditions, a photovoltaic module is likely to experience conditions that produce more current and/or voltage than reported at standard test conditions. The requirements of the National Electrical Code (NEC) in Article 690 shall be followed to address these increased outputs. In installations not under the requirements of the NEC, the values of I_{sc} and V_{oc} marked on this module should be multiplied by a factor of 1.25 when determining component voltage ratings, conductor ampacities, over-current device ratings, and size of controls connected to the PV output.
17. Our module application class is class A, modules rated for use in this application class may be used

in systems operating at greater than 50V DC or 320W, where general contact access is anticipated..

18. Installation shall be in accordance with CSA C22.1, Safety Standard for Electrical Installations, Canadian Electrical Code, Part 1.

19. A module with exposed conductive parts is considered to be in compliance with UL 1703 only when it is electrically grounded in accordance with the instructions presented below and the requirements of the National Electrical Code.

20. The modules have achieved fire rating Type 13 according UL1703 updated on 20th May 2014. The fire rating of this module is valid only when mounted as specified in the mechanical mounting instructions in this document.

21. The actual system fire rating should always be evaluated along with the roof cover and mounting.

22. Any module without a frame (laminate) shall not be considered to comply with the requirements of UL 1703 unless the module is mounted with hardware that has been tested and evaluated with the module under this standard or by a field Inspection certifying that the installed module complies with the requirements of UL 1703.

3. UNPACKING AND STORAGE

1. Before installation, keep all modules and electrical contacts clean and dry.
2. If it is necessary to store modules temporarily, a dry, ventilated room should be used.
3. When unpacking, carry modules with both hands. Do not place modules on top of each other.
4. The double glass module should be handled carefully, so non-slip gloves are required for handling and installation.
5. Please use the appropriate removal tools when dismantling the plywood cases.

4. PRODUCT IDENTIFICATION

We recommend that you take note of the unique serial number on each module.

5. ENVIRONMENTAL CONDITIONS AND SITE SELECTION

5.1 CLIMATE CONDITION

Install HD solar Crystalline series modules in the following conditions:

Ambient temperature: -40°C to +50°C

Operating temperature: -40°C to +85°C

Storage temperature: -20°C to +50°C

Humidity: below 85RH%

Mechanical Load Pressure*: 5400Pa (550 Kg/m²) Max from the front side (snow) 2400Pa (wind) from the rear.

* Mechanical load bearing specifications (including wind and snow loads) of the module is based on HD solar mounting methods. A professional system installer must be responsible for the mechanical load calculations based on the specific system design

HD SOLAR

5.2 SITE SELECTION

1. In most applications, HD solar PV modules should be installed in a location where they will receive maximum sunlight throughout the year.
2. Modules should not be shaded by buildings, trees, chimney, etc. at any time of the day.
3. Do not install in corrosive environments, such as beaches or landfill that can be easily flooded.
4. Do not install PV modules in a location where modules could be immersed in water or continually exposed to water from a sprinkler or fountain.
5. Do not install PV modules over naked flames or flammable materials.
6. Interspaces, the clearance between the module edge and surface of the wall or roof, of at least 115mm is required to prevent wiring damage and to allow air to circulate behind the module.

6. MOUNTING INSTRUCTIONS—HD SOLAR CLAMP

The module is considered to be in compliance with UL 1703 only when the module is mounted in the manner specified by the mounting instructions below. This mounting is using HD solar Clamps, alternate mountings are available.

6.1 COMPONENTS OVERVIEW

These components are only for use in the installation example in this section - For TSM-xxxModules		
Components Name	Overview	Description
Clamp Material: Aluminum alloy 6063 EPDM(ethylene-propylene-diene-terpolymer rubber), spring, bolt, nut, washer, spring washer		Used to connect modules together

6.2 MATERIAL BOM These components are only for use in the installation example in this section - For TSM-xxx Modules

Item	Name	Picture	Size (mm)	Material
1	Clamp		Length and width 150*50	Aluminum alloy 6063
2	Clamp Block		Length and width 150*60	Aluminum alloy 6063
3	EPDM		Length width and thickness Up 150*20*2 Down 150*20*2.7	Rubber (suggest to use: MH45643, type name PMP-P-2100, made by PIONEER MATERIAL PRECISION TECH)
4	Connector parts		Bolt + washer + spring washer + Nut	SUS 304

HD SOLAR

Notice:

- Please contact HD solar if you want to change the size of the screw.
- Please note that all dimensions above are in mm units.

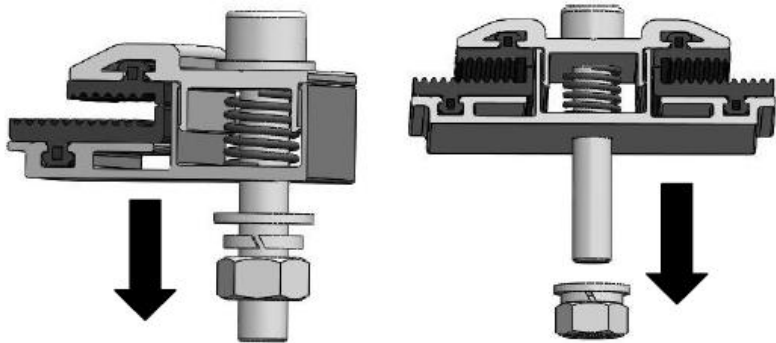
6.3 MOUNTING METHODS

Please read this chapter in its entirety to familiarize with the process before beginning the installation. Also, be sure that the site has been completely prepared before beginning the installation.

Installation Example A - For C structure steels type 2 rails- For HD-xxx system

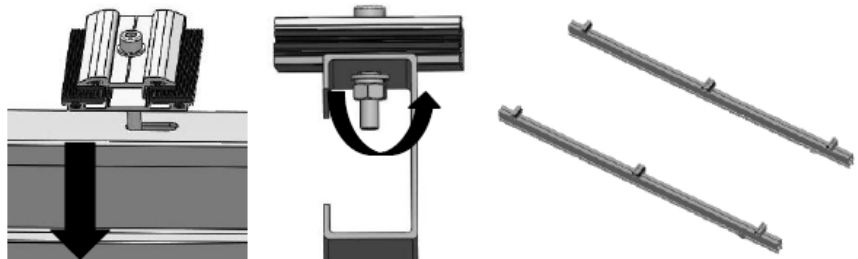
STEP 1: Remove the connector parts

Remove the bottom connector parts.
Connector parts : M8 Nut , spring washer and washer.



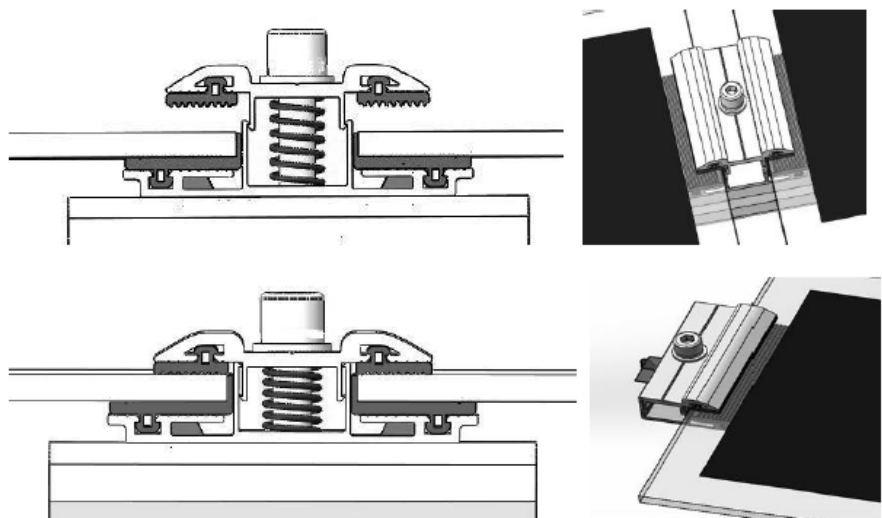
STEP 2: Install the clamp

Put the clamp bolts into the installation holes, and then tighten the nuts. Repeat, put all clamp on the rail, keep the distance between two clamps can install the PV modules. (about 1m)



STEP 3: Install the PV modules

Insert the PV module into the clamp, and then tighten the nut. M8 ss304(16N·m~20N·m)

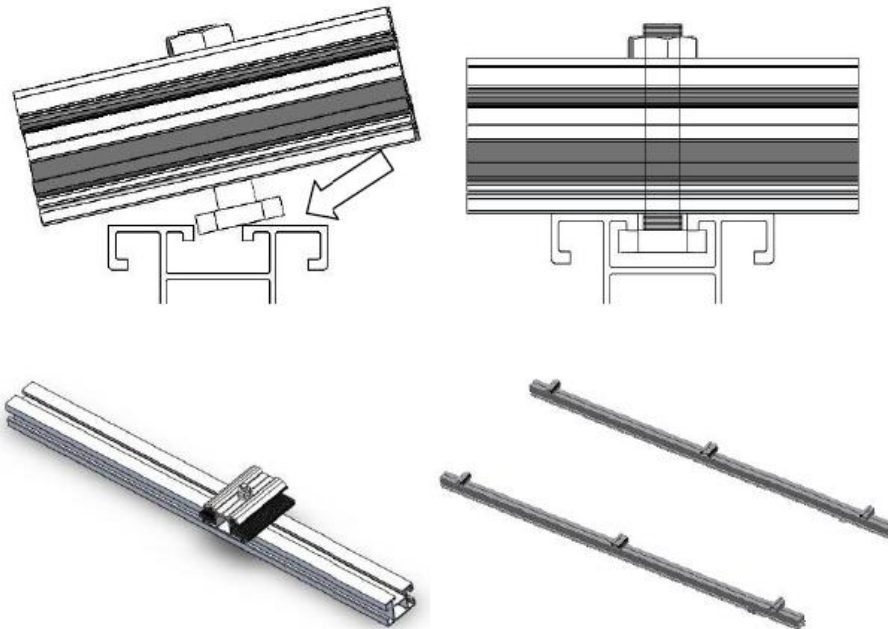


HD SOLAR

Installation Example B - For Aluminum rails- For TSM-xxx system

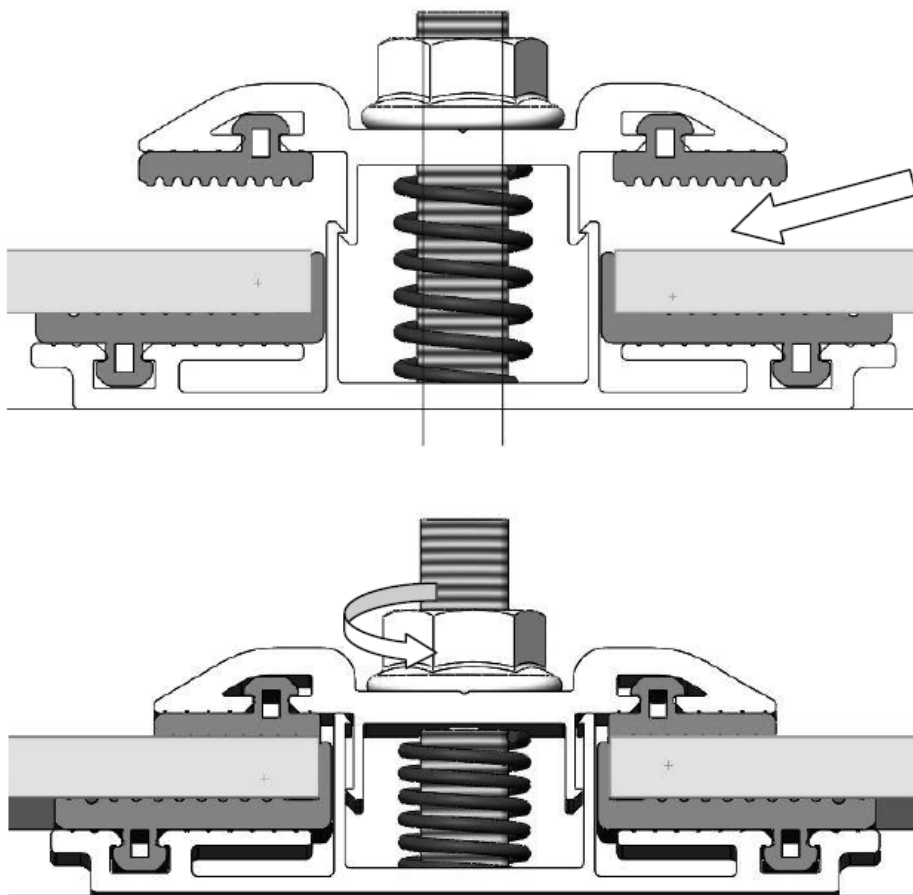
STEP 1: Install the clamp

Insert clamp into the connector racking.
M8 ss304



STEP 2: Install the module

Insert the PV module into the clamp, and then tighten the nut.
M8 ss304(16N·m~20N·m)

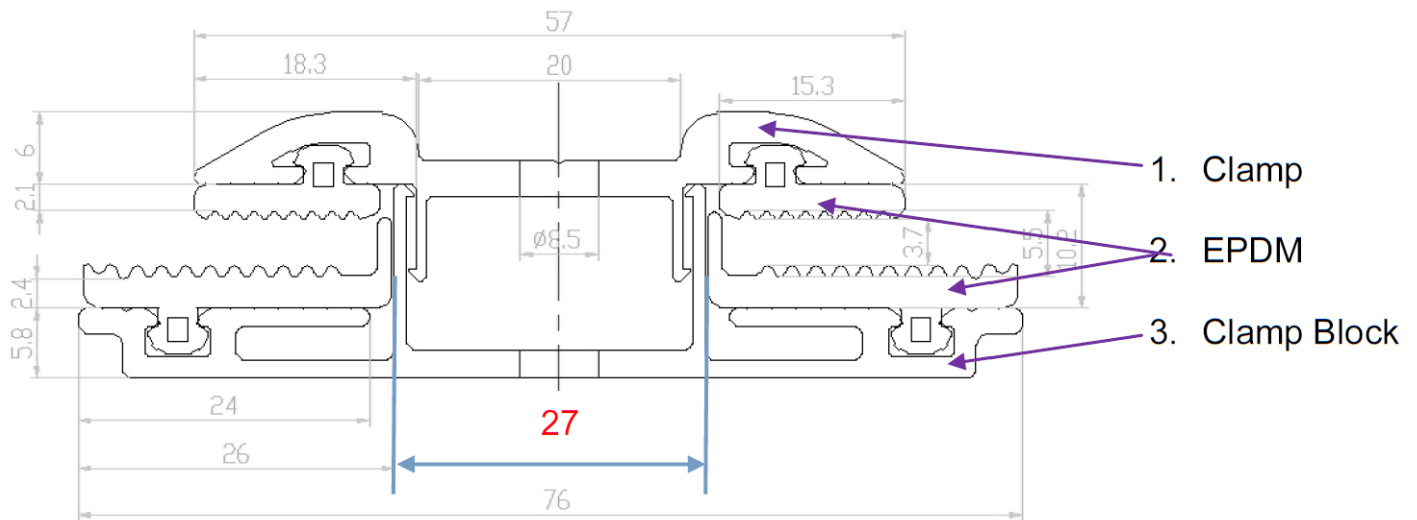


HD SOLAR

6.4 HD SOLAR CLAMP COMPATIBILITY WITH VARIOUS RACKING SYSTEMS.

The following examples illustrate how to evaluate HD solar Clamp compatibility with various racking systems.

Please find the dimension below to evaluate the racking system, contact HD solar if you want to change the size of the screw. Please note that all dimensions below are in mm units.

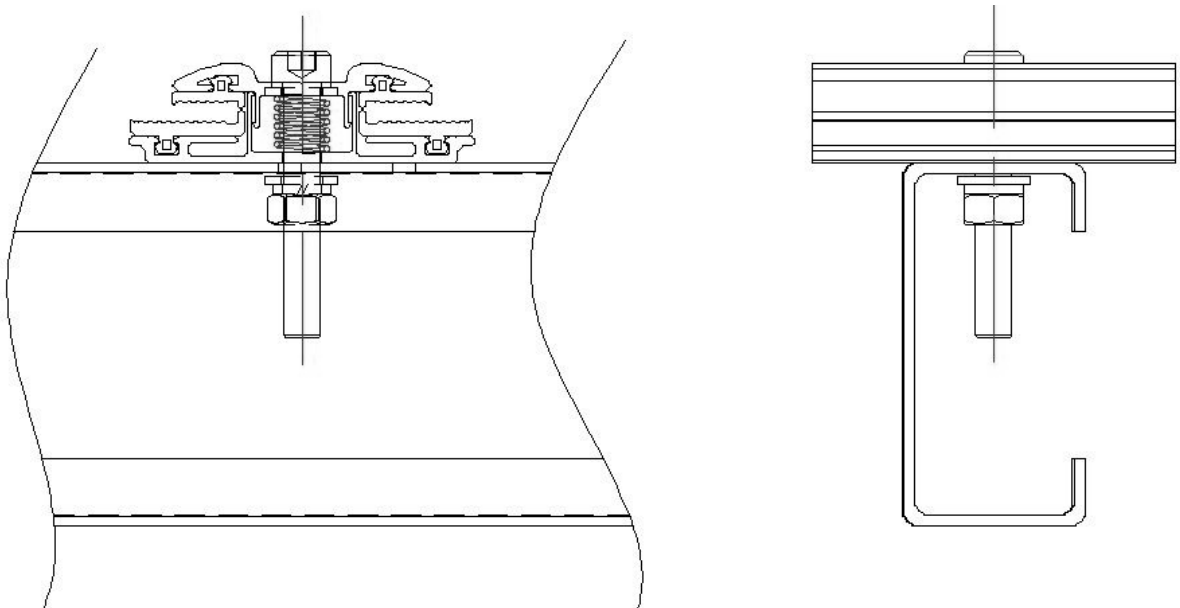


Section view of the installation

Example A : C structure steel type 2 racking installation

HD solar suggests using M8 bolts to fix the clamp. The torque for M8 screw is 16-20 N*M.

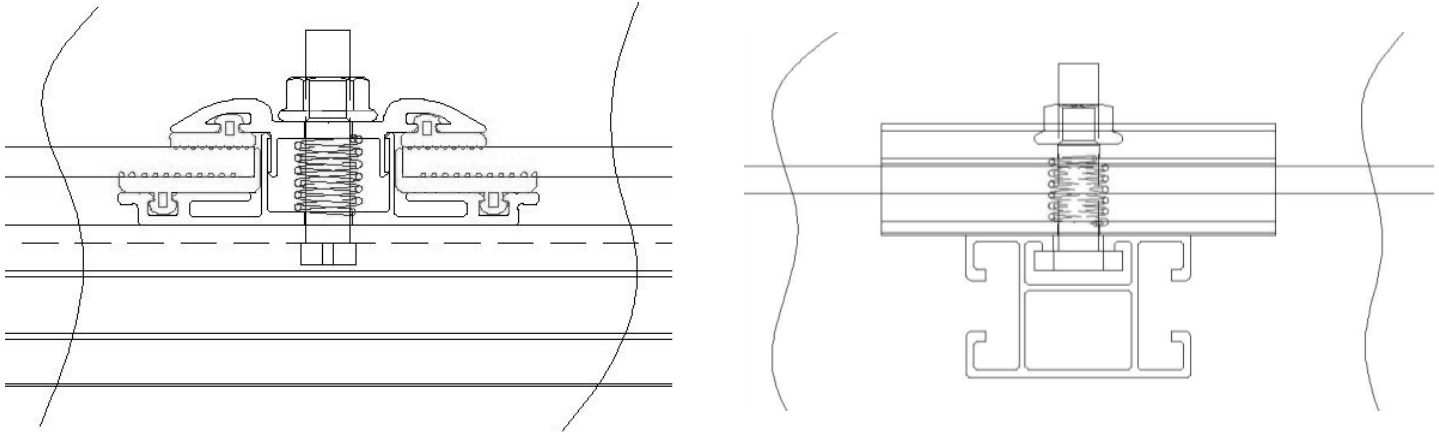
When choosing the bolts and nuts for the clamp, please note your racing's dimensions first.



HD SOLAR

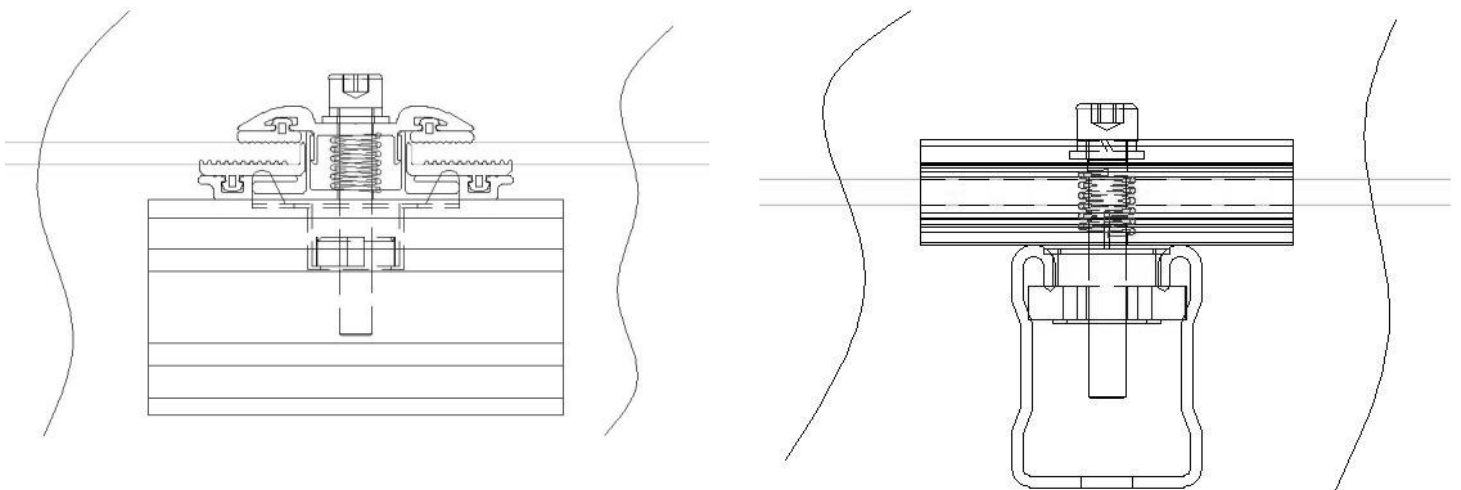
Example B : Aluminum racking installation

HD solar suggests using M8 bolts to fix the clamp. The torque for M8 screw is 16-20 N*M.
When choosing the bolts and nuts for the clamp, please note your racking's dimensions first.
Aluminum frames limit the screws fastening. As shown below, the screw cannot fasten downwards. In this case, the T type of cap is recommended.



Example C : C structure steel type 1 racking installation

HD solar suggests using M8 bolts to fix the clamp. The torque for M8 screw is 16-20 N*M.
When choosing the bolts and T-shape nuts for the clamp, please note your racking's dimensions first.
For C structure steel type 1 racking, due to the amount of space inside the racking section, many choices are available including T-shape nuts.



Note:

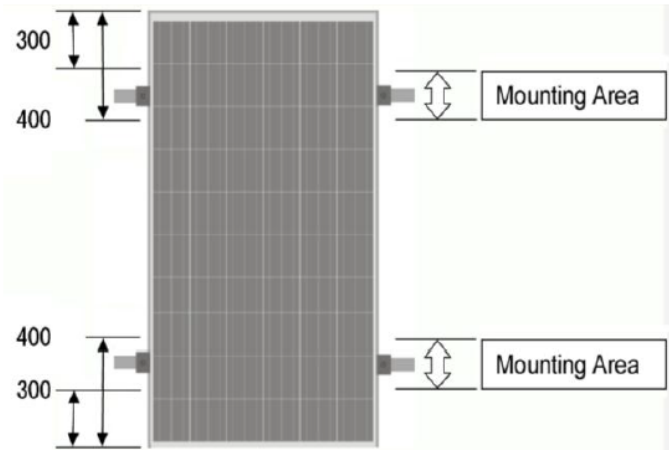
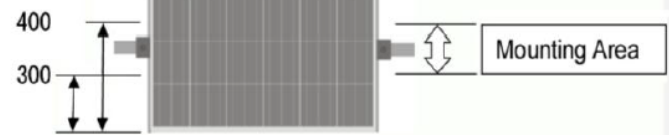
Please consult with a HD solar engineer before installing with the frameless clamps.

6.5 CLAMP OPTIONS

60Pcs MODULES

Clamps should be connected to the module between 300 and 400 mm from the edge of the module. This distance is from the module edge to the middle of the clamp.

***Note: Need two support rails below the PV module to make sure the Mechanical load.**

Mechanical Load Pressure	Length Of The Clamp	Mounting Direction
+2400 Pa /-2400 Pa	80mm	 <p>The diagram shows a vertical PV module with a grid pattern. On the left side, two vertical double-headed arrows indicate distances from the edge to the center of the clamp: 300mm and 400mm. A horizontal double-headed arrow indicates the clamp length is 80mm. On the right side, a box labeled 'Mounting Area' is shown with a vertical double-headed arrow indicating the clamp's position relative to the module edge.</p>
+5400 Pa /-2400 Pa	150mm	 <p>The diagram shows a vertical PV module with a grid pattern. On the left side, two vertical double-headed arrows indicate distances from the edge to the center of the clamp: 400mm and 300mm. A horizontal double-headed arrow indicates the clamp length is 150mm. On the right side, a box labeled 'Mounting Area' is shown with a vertical double-headed arrow indicating the clamp's position relative to the module edge.</p> <p>*Note: The above-described distance is from the module edge to the middle of the clamp. *Note: Need two support rails below the PV module to make sure the Mechanical load.</p>

7. MODULE WIRING

Each module has two 4mm² diameter type standard 90°C sunlight resistant output cables each terminated with plug & play connectors. This cable is suitable for applications where wiring is exposed to the direct rays of the sun. We recommend that all wiring and electrical connections comply with the appropriate national electrical code(s).

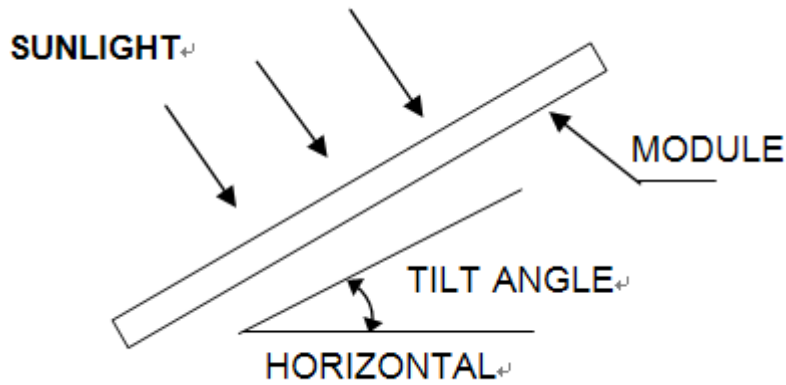
For field connections, use the minimum 4mm² diameter copper wires insulated for a minimum of 90°C and sunlight resistant as well.

The minimum and maximum outer diameters of the cable are 5mm to 7mm. Refer to Datasheet Specifications for the maximum electrical rating of series fuse

8. MODULE TILT ANGLE

HD solar PV modules connected in series should be installed at the same orientation and angle. Different orientation or angle may cause loss of output power because each module may be exposed to different amounts of solar irradiation.

HD solar PV modules produce the most power when they are perpendicular to incoming sunlight. For installations where the PV modules are attached to a permanent structure, the PV modules should be tilted for optimum winter performance. The module tilt angle is measured between the solar modules and the ground. Optimal tilting of PV module is almost the same as the latitude of installation location.



SPV module Tilt angle

10. MAINTENANCE AND CARE

Under most weather conditions, normal rainfall is sufficient to keep the PV module glass surface clean. If dust or dirt build-up becomes excessive, clean the glass only with a soft cloth using mild detergent and water.

Do not clean the modules with cold water during the warmer hours of the day in order to avoid creating any thermal shock that may damage the module.

At least once a year, it is recommended to check the torque of terminal screws and the general condition of wiring. Also, check that mounting hardware is properly torqued. Loose connections will result in damage of the array.

Modules that are replaced must be the same type. Do not touch live parts of cables and connectors. Use appropriate safety equipment (insulated tools, insulating gloves, etc.) when handling modules.

Cover the front surface of modules by an opaque material when repairing. Modules when exposed to sunlight generate high voltage and are dangerous.

WARNING: For any electrical maintenance, the PV system must first be shut down. Improper maintenance can cause lethal electric shock and/or burns.

11. SPECIFICATIONS

For module specifications, please see the Datasheet included in the shipment carton and visit HD solar website www.hdosolar.com to get the datasheet of each product or the comprehensive product catalogue.

12. BYPASS DIODES AND BLOCKING DIODES

Partial shading of an individual module can cause a reverse voltage across the shaded PV module. Current is then forced to go through the shaded area by the other modules. When a bypass diode is wired in parallel with the series string, the forced current will flow through the diode and bypass the shaded PV module, thereby minimizing module heating and array current losses.

Currently, HD solar PV modules are equipped with bypass diodes in the junction box. The diode type is SB3040DY, (rated maximum 40V PIV, 16A, 3pcs provided). Do not try to open the junction box to change the diodes even if it malfunctions.

In a system that uses a battery, blocking diodes are typically placed between the battery and the PV

HD SOLAR

module output to prevent battery discharge at night.

Diodes that are used as blocking diodes must have:

- Rated Average Forward Current [$I_{F(AV)}$] above the maximum system current at the highest module operating temperature.
- Rated Repetitive Peak Reverse Voltage [V_{RRM}] above the maximum system voltage at the lowest module operating temperature.

13. CONTACTS

These solar modules do not contain any user serviceable parts.

If you suspect that your installation is not working properly, then contact your installer immediately.

1. Contact your installer
2. Contact Trina Solar after-sales service team at: www.hdosolar.com
3. Submit the Customer Feedback form at: www.hdosolar.com; one of our technical service representatives will contact you as quickly as possible. A username and password is required to send feedback from the customer service

WARNING: For any electrical maintenance, the PV system must first be shut down. Improper maintenance can cause lethal electric shock and/or burns.