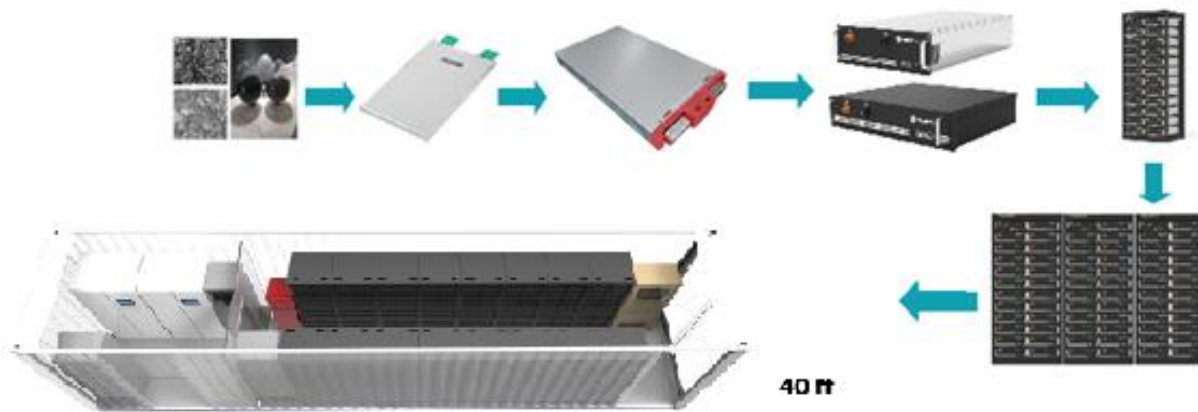


# BATTERY ENERGY STORAGE SYSTEM

VERTICALLY INTEGRATED THE WHOLE LITHIUM BATTERY INDUSTRIAL CHAIN

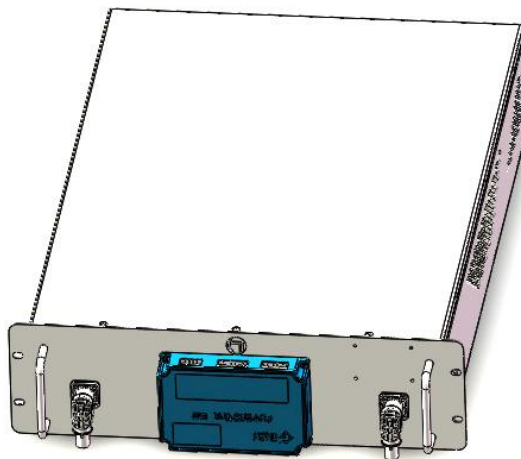


## . NCM Battery Series



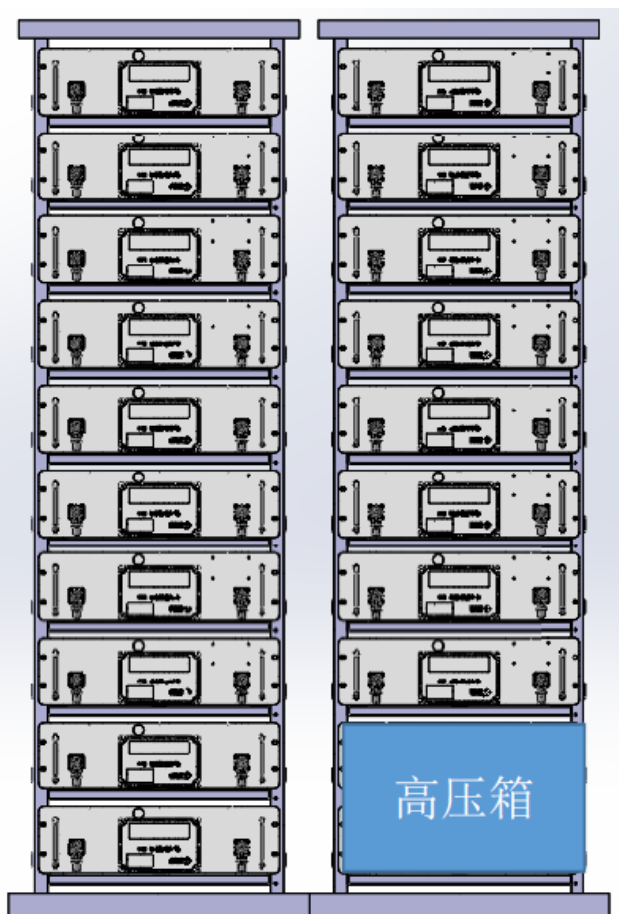
NO	Item	ENP27148130
1	Classification	Aluminum prismatic
2	Nominal capacity	40 Ah
3	Nominal voltage	3.65 V
4	Energy density	171 Wh/kg
5	AC-impedance	$\leq 0.8\text{m}\Omega$
6	Weight	1035g
7	Charge current	1C/2C(10s)
8	Charge voltage	$4.15\text{V} \pm 0.05\text{V}$
9	Discharge current	2C/4C(30s)
10	Discharge end voltage	3.0 V

## BATTERY PACK



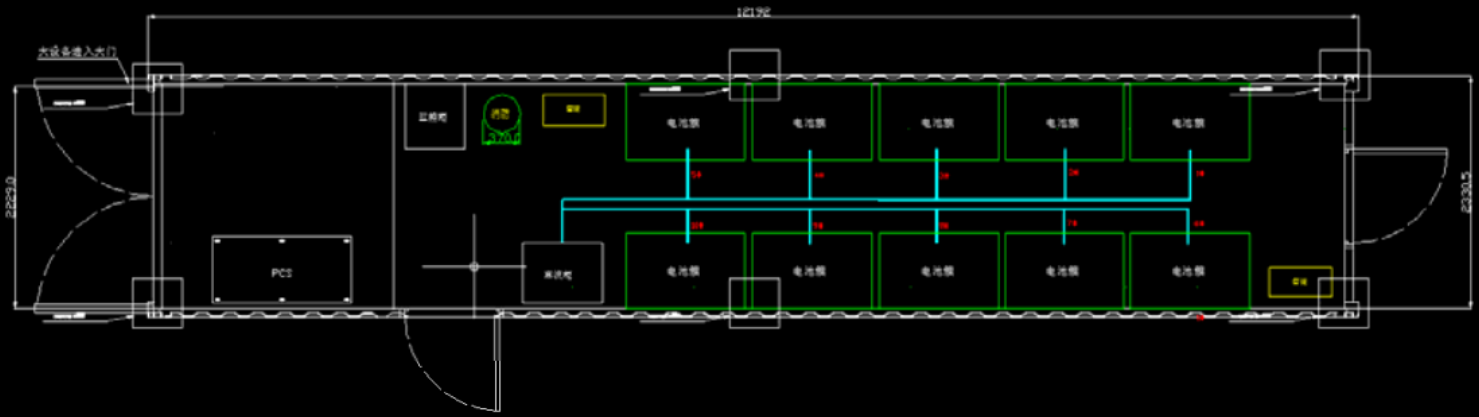
No.	Item	6.14kwh Energy storage system
1	Capacity	160Ah
2	Nominal Voltage	38.4 V
3	Operating voltage range	33.6V~43.2V
4	Maximum Continuous Charge Current	160A
5	Maximum Continuous Discharge Current	480(30S)
6	Dimension / mm	482×133×730(W×H×D)
7	Weight/kg	65KG
8	Working Temperature	0~45 (Charge) -20~55 (discharge)
9	System Composition	4P12S

# BATTERY PACK 110KWH ENERGY STORAGE SYSTEM

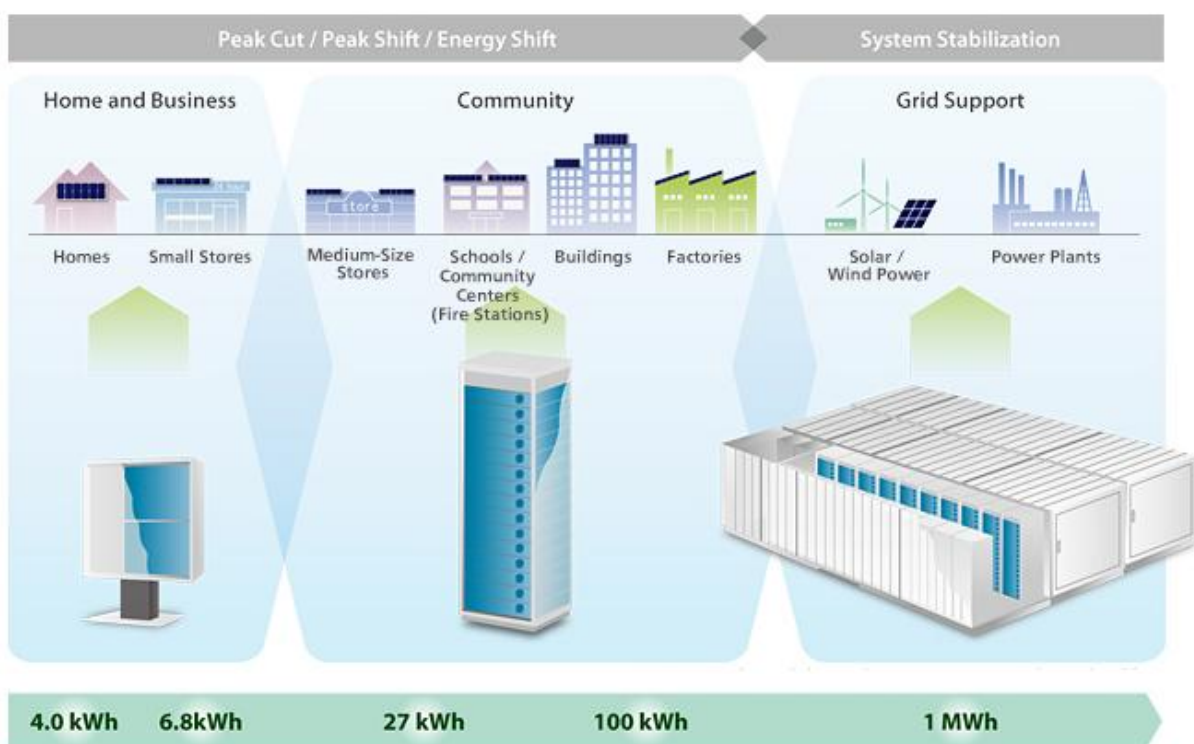


No.	Item	110Kwh Energy storage system
1	Capacity	160Ah
2	Nominal Voltage	691.2V
3	Operating voltage range	604.8V—777.6V
4	RACK /KWH	110.6 KWH
5	Balancing scheme for single cell	Active balancing function (whole) low voltage power supply, high voltage discharge
6	Cabinet size	1250x1800x750 (W×H×D)MM
7	Weight/kg	1400KG
8	working temperature	0~50 (Charge) -20~60 (discharge)
9	Communication	CAN2.0B

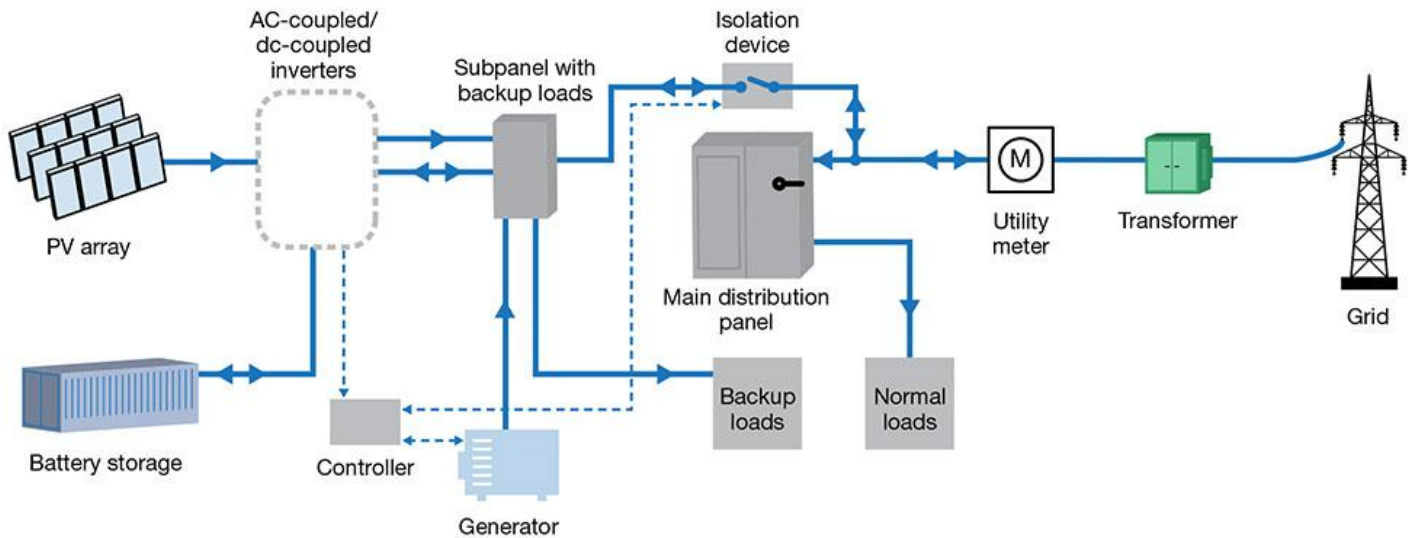
# 1100KWH(1MWH) ENERGY STORAGE SYSTEM FOR 40GP CONTAINER



No.	Item	1100Kwh Energy storage system
1	Battery system	10 RACKS and PCS
2	Nominal Voltage	691.2V
3	Operating voltage range	604.8V—777.6V
4	RACK /KWH	1106 KWH
5	Cabinet size	12.192x2.438x2.591 (W×H×D)M
6	Weight/kg	35T



# BATTERY STORAGE ON GRID



**Figure 3** The hybrid microgrid in this figure includes a fossil fuel generator and connects on the supply side of the main service panel, which accommodates higher system capacities than a load-side connection.

# BATTERY STORAGE SAMPLE



## HD SOLAR POWER LTD

Phone:86-18688922286

Skype:hdosolar

[http://:www.hdosolar.com](http://www.hdosolar.com)

ADD: Rm1508 15/F Two Grand Tower 625 Nathan Road Kowloon  
Hongkong

Email:oma@hdosolar.com